
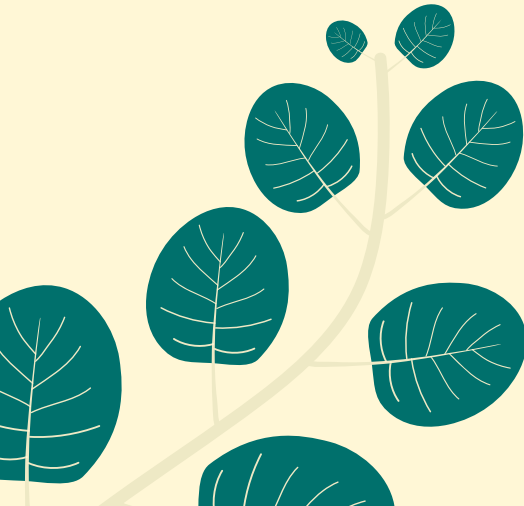




Golden Rise

B E N D I G O

MAKE YOURSELF AT HOME



A seniors living
community by



Discover a new way of life when you move to Golden Rise. Bendigo's newest seniors living community offers residents a stylish, low-maintenance lifestyle with like-minded neighbours.

Golden Rise is located on an elevated site with picturesque views of the surrounding district, and set within landscaped gardens featuring native plants and trees. Enjoy easy access to nearby shopping centres, recreational and healthcare centres, with even more choice available in Bendigo CBD — just a short drive away.

Live independently with a sense of security and peace of mind, knowing you can access personalised care and support — housekeeping, home maintenance, transport and home care services — if you would prefer a helping hand.

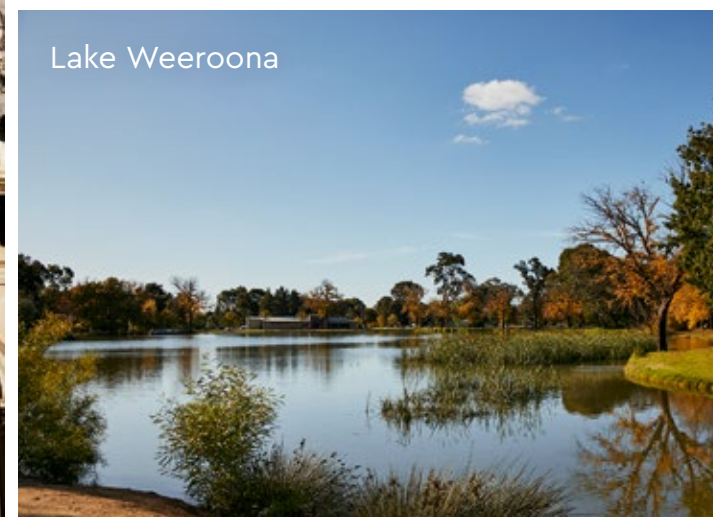
Enjoy a vibrant, easy-living retirement with a community of new friends at Golden Rise.



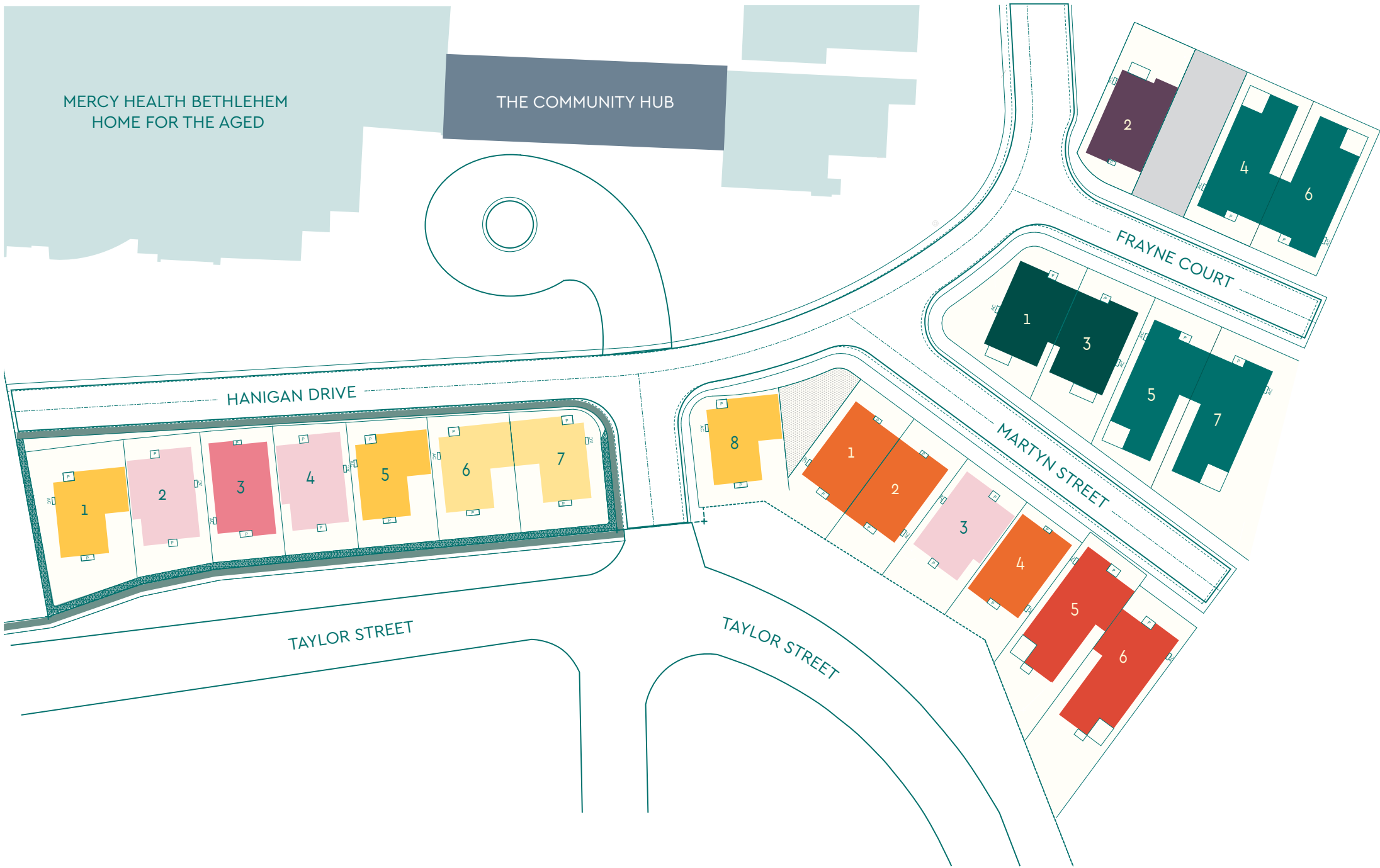
Bendigo Historic Post Office



Lake Weeroona



Your village and local area.



- The Acacia
- The Correa
- The Grevillea
- The Wattle
- The Mallee
- The Moonah
- The Hakea
- The Banksia
- The Myrtle

Located in Golden Square, Golden Rise is bound by Specimen Hill Road and Taylor Street, about three kilometres from the centre of Bendigo. It is here that Bendigo's gold rush movement first began in 1851, making it one of the world's richest cities.

Golden Square is a thriving suburb with a full range of conveniences, including a variety of shops, wellbeing centre, pubs and cafes. With a bus stop just around the corner from Golden Rise, you can be in Bendigo in minutes.

In Bendigo, meet friends for coffee in one of the many cafes on View Street. Wander a little further down the street and you will find yourself in the heart of Bendigo's arts and culture precinct. Enjoy a spot of shopping and discover the creations of local artisans or meander through the Bendigo Botanic Gardens, Bendigo Creek Trail or around Lake Weeroona.

Bendigo Railway Station, with regular V/Line services, offers the perfect opportunity for day trips to nearby towns such as Castlemaine, Kyneton and Woodend or to Melbourne.





Living at Golden Rise.

YOUR HOME

Golden Rise offers a selection of contemporary two and three-bedroom homes, featuring open-plan living, secure garages and private gardens. Each of the nine floor plans has been designed for comfort and ease of living. Choose the one that best suits your lifestyle and budget. You will enjoy:

- low-maintenance living
- quality, modern fittings
- contemporary kitchen with quality appliances, including a dishwasher
- carpeted bedroom and living areas or vinyl floorboards
- a secure garage
- comfort all year round with reverse-cycle heating and cooling

- spacious design with room to relax
- an environmentally sustainable home built with considered construction materials, a six-star energy rating, double-glazed windows and rainwater tank
- wholesale electricity prices
- your own street address.



Golden Rise is more than just a home. You will discover a place that provides an enviable location for your retirement where you can feel confident all your needs will be met, now and in the future, including:

YOUR COMMUNITY

Enjoy the meaningful contact and interaction that comes with living in a community of like-minded people. You won't need to go far to meet up with neighbours and friends for drinks or a barbecue.

YOUR LIFESTYLE

Enjoy a fulfilling lifestyle at Golden Rise. Living in a community provides a range of benefits including social connections and activities, companionship and a sense of security.

YOUR SAFETY

Feel secure at Golden Rise with a 24-hour emergency response system and if you're heading away, feel safe knowing there will be others around to keep an eye on your home.

YOUR FLEXIBLE SERVICES

Choose extra assistance and support if and when you need it. Additional services can be tailored to suit your individual needs on a 'pay-as-you-go' basis, so as your needs change, so can the services you receive.

YOUR ADVANTAGE

You get more than just a home when you purchase the lease of your unit. Enjoy the benefits of being able to access common areas and facilities, as an extension of your home.

YOUR CHOICE

Golden Rise offers a range of financial options to suit your lifestyle and budget.

YOUR CARE AND SUPPORT

If you need additional support to live independently, we can help you access personalised care including assistance with day-to-day tasks or complex medical support.

YOUR PEACE OF MIND

Golden Rise is located beside Mercy Health Bethlehem Home for the Aged, which means you have access to some of its facilities such as the cafe, hairdresser and chapel. Co-location offers peace of mind to those who are thinking ahead to when they or their partner might need a higher level of care.

Live at Golden Rise and discover a new home, caring community and a whole new outlook on life.

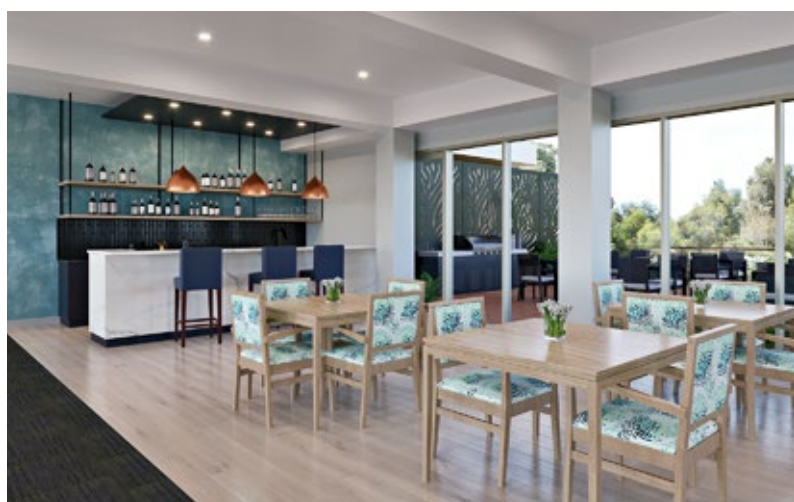


Images are for illustrative purposes only and while generally typical, minor variations may apply. Furniture is not included.



YOUR COMMUNITY HUB

Just a short stroll from your home is the Golden Rise community hub which includes a club lounge, bar and outdoor entertainment area for you to enjoy with family and friends. This space is an extension of your home and the perfect place to connect with the Golden Rise community.



2 Taylor Street, Golden Square, Vic 3555
p: 1300 112 732 | e: goldenriseenquiries@mercy.com.au

goldenrisebendigo.com.au

A seniors living
community by

